



Budget Mobile Bodyshop Ltd

# FULL CAB REPAIR AND PAINT FOR ARCHWAY ROADMASTER EFFICIENT

HIGH-QUALITY RESTORATION, BUDGET-FRIENDLY SOLUTIONS



## CLIENT ISSUE

Archway RoadMaster required a complete repair and repainting of the cabs on their fleet of 24 pothole repair vehicles. This project was a short-term contract with tight deadlines. The scope of the work included all painted and textured panels on the cabs of the vehicles, which are integral to the functionality and appearance of the fleet.



## THE SOLUTION

We offered Archway RoadMaster a comprehensive and efficient solution to ensure their fleet was restored to optimal condition without disrupting their operations. The entire repair and painting process was carried out on-site at the customer's location to minimise downtime.

Our team provided a dedicated member of staff to work on-site permanently, with additional staff on hand when available to meet the agreed timescale.



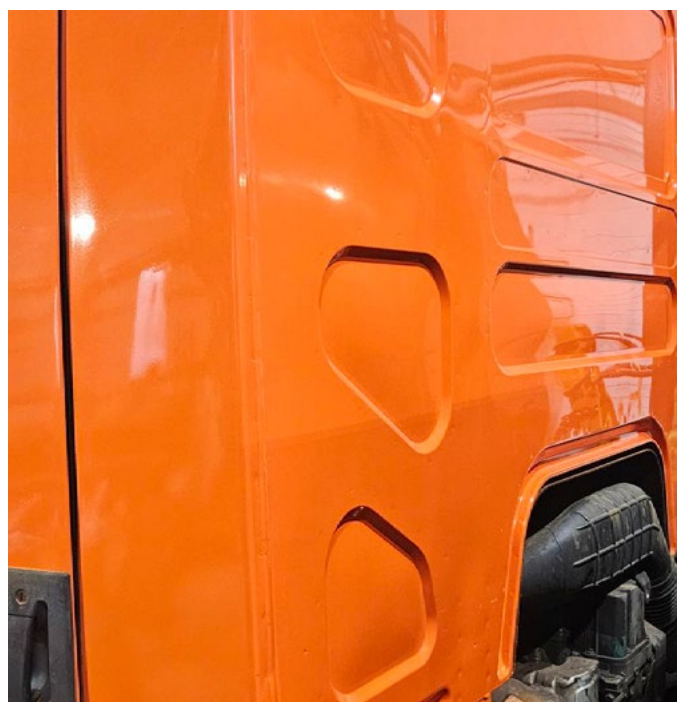
## THE REPAIR PROCESS

1. **On-Site Work:** To accommodate the client's needs, all 24 trucks were repaired and painted at the customer's site near Hull, with one of our experienced staff members stationed there permanently to oversee the repairs.
2. **Vehicle Preparation:** Each truck was fully stripped down to prepare for the necessary repairs. This step ensured that all damaged areas were properly assessed and repaired.
3. **Repairs:** All necessary repairs were completed to restore the trucks to a high standard.
4. **Priming & Painting:** The trucks were primed and painted, with gloss panels and textured panels carefully finished to ensure durability and a high-quality appearance.
4. **Accommodation:** Due to the location of the site, we arranged hotel accommodation for our staff, ensuring they were available on-site without interruption.



## THE OUTCOME

The full cab repair and paint process was completed on time, with all 24 vehicles successfully restored to the required standard. Our commitment to meeting deadlines and providing high-quality work ensured that the client's fleet was back in operation with minimal disruption. Our team has a long-standing relationship with Mark, our client contact, facilitated smooth communication and project execution.



## THE CONCLUSION

This case demonstrates our capability to manage large-scale projects while maintaining high standards and meeting tight deadlines. By offering flexibility with on-site repairs and providing dedicated staffing, we ensured the successful completion of the project and the client's satisfaction.



*This project was critical to maintaining the functionality and appearance of our trucks, which play a vital role in our operations. Their team provided a dedicated staff member who was stationed at our location. Their commitment to quality and ability to work within our operational constraints made them invaluable partners. We appreciate their professionalism and the outcome was amazing.*

**Mark Chell, Archway Roadmaster**



## A FAMILY RUN BUSINESS

We are an independent, family-run and family-owned commercial bodyshop business, proud to offer a comprehensive range of services through a single point of contact:

- Mobile Bodyshop Service
- Commercial Bodyshop
- Commercial Panel Painting



## GET IN TOUCH

🌐 [www.budgetmobilebodyshop.co.uk](http://www.budgetmobilebodyshop.co.uk)

✉ [info@budgetmobilebodyshop.co.uk](mailto:info@budgetmobilebodyshop.co.uk)

☎ 01623 206827